



# Accreditation Service for Food Testing

## 食品測試的認可服務

Dr. C. W. Ho

Hong Kong Accreditation Service



# 香港認可處 (HKAS)

HKAS is part of Innovation and Technology Commission of the Hong Kong Special Administration Region (HKSAR) Government.  
香港認可處是香港特別行政區政府創新科技署屬下工作組別




香港特別行政區政府  
創新科技署

It was set up in 1998 (previously known as HOKLAS since 1985)於  
1998年成立(前身是香港實驗所認可計劃HOKLAS執行機關，於  
1985年成立)

It is the official accreditation body in Hong Kong  
是香港官方認可機構

It provides independent and impartial accreditation services  
提供獨立和公正的認可服務

- 
- ✦ HKAS provides accreditation (認可) service to testing laboratories, certification bodies and inspection bodies under 3 schemes:



- HOKLAS (香港實驗所認可計劃)
- HKCAS (香港認證機構認可計劃)
- HKIAS (香港檢驗機構認可計劃)

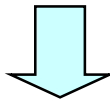
- ✦ Participation in the 3 schemes is voluntary
- ✦ The schemes are operated in accordance with international standards



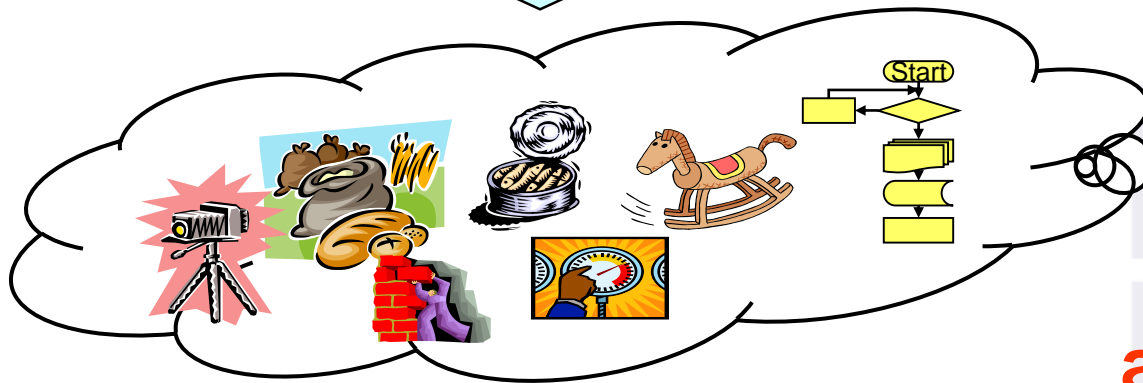
**Accreditation Body**  
- provides the assurance



**Are they competent?**

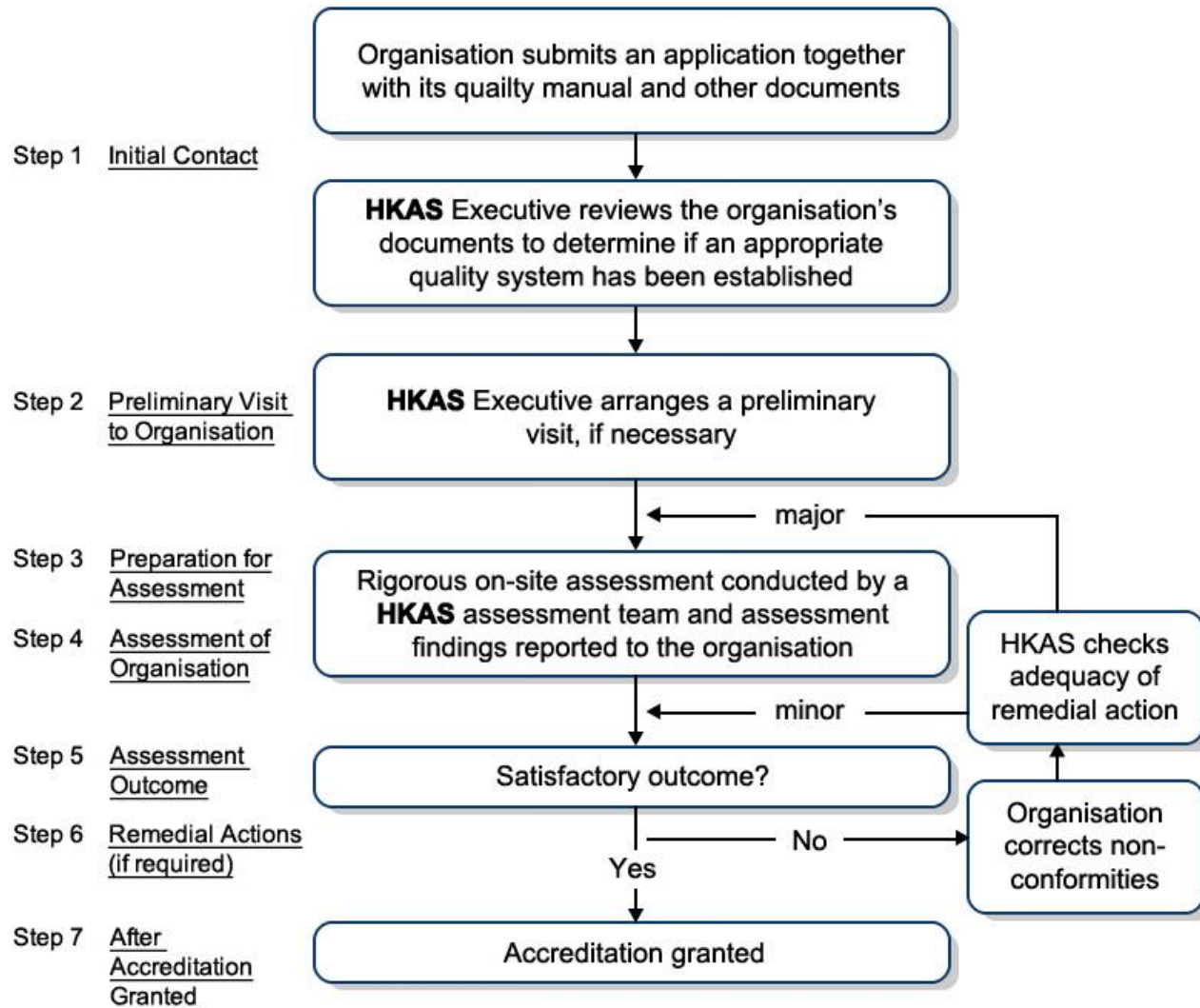


**Test, Certification, Inspection**



**Are they acceptable?**

# Accreditation Process 認可程序



# Certificate of Accreditation 認可證書



Hong Kong Accreditation Service  
香港認可處

## Certificate of Accreditation 認可證書

This is to certify that  
特此證明

GOVERNMENT LABORATORY - Analytical and Advisory Services Division  
政府化驗所 - 分析及諮詢事務部

7/F, Homantin Government Offices, 88 Chung Hau Street, Homantin, Kowloon, Hong Kong  
香港九龍何文田忠孝街八十八號何文田政府合署七樓

is accredited by the Hong Kong Accreditation Service (HKAS) to ISO/IEC 17025:2017  
for performing specific laboratory activities as listed in the scope of accreditation within the test category of  
獲香港認可處根據ISO/IEC 17025:2017認可  
進行載於認可範圍內下述測試類別中的指定實驗室活動

Food  
食品

This accreditation to ISO/IEC 17025:2017 demonstrates technical competence for a defined scope and  
the implementation of a management system relevant to laboratory operation  
(see joint IAF-ILAC-ISO Communication)

此項 ISO/IEC 17025:2017 的認可資格證明此實驗室具備指定範圍內所須的技術能力並  
實施一套與實驗室運作相關的管理體系  
(見國際認可論壇・國際實驗室認可合作組織及國際標準化組織的聯合公報)。

The common seal of HKAS is affixed hereto by the authority of the HKAS Executive  
現經香港認可處執行機關授權在此證書上香港認可處的印章

SHUM Wai-leung, Executive Administrator  
執行幹事 沈偉良  
Issue Date : 21 January 2020  
簽發日期：二零二零年一月二十一日

Registration Number: HOKLAS 001  
註冊號碼：



Date of First Registration : 14 March 1986  
首次註冊日期：一九八六年三月十四日

This certificate is issued subject to the terms and conditions laid down by HKAS  
本證書按照香港認可處訂立的條款及條件發出

L001900



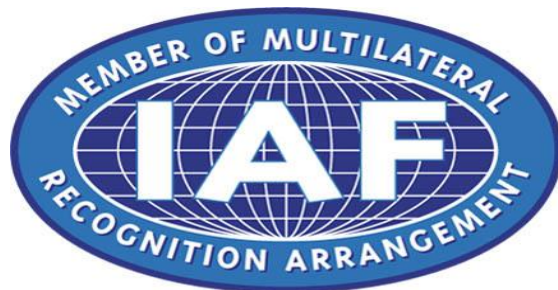
# Test Reports & Certificates Recognised Internationally 測試報告及證書獲國際承認

- ✦ HKAS is signatory to the International Laboratory Accreditation Cooperation (ILAC) Mutual Recognition Arrangement (MRA) and International Accreditation Forum (IAF) Multilateral Recognition Arrangement (MLA)

香港認可處 (HKAS) 是國際實驗所認可合作組織 (ILAC) 及國際認可論壇 (IAF) 的互認協議簽署成員

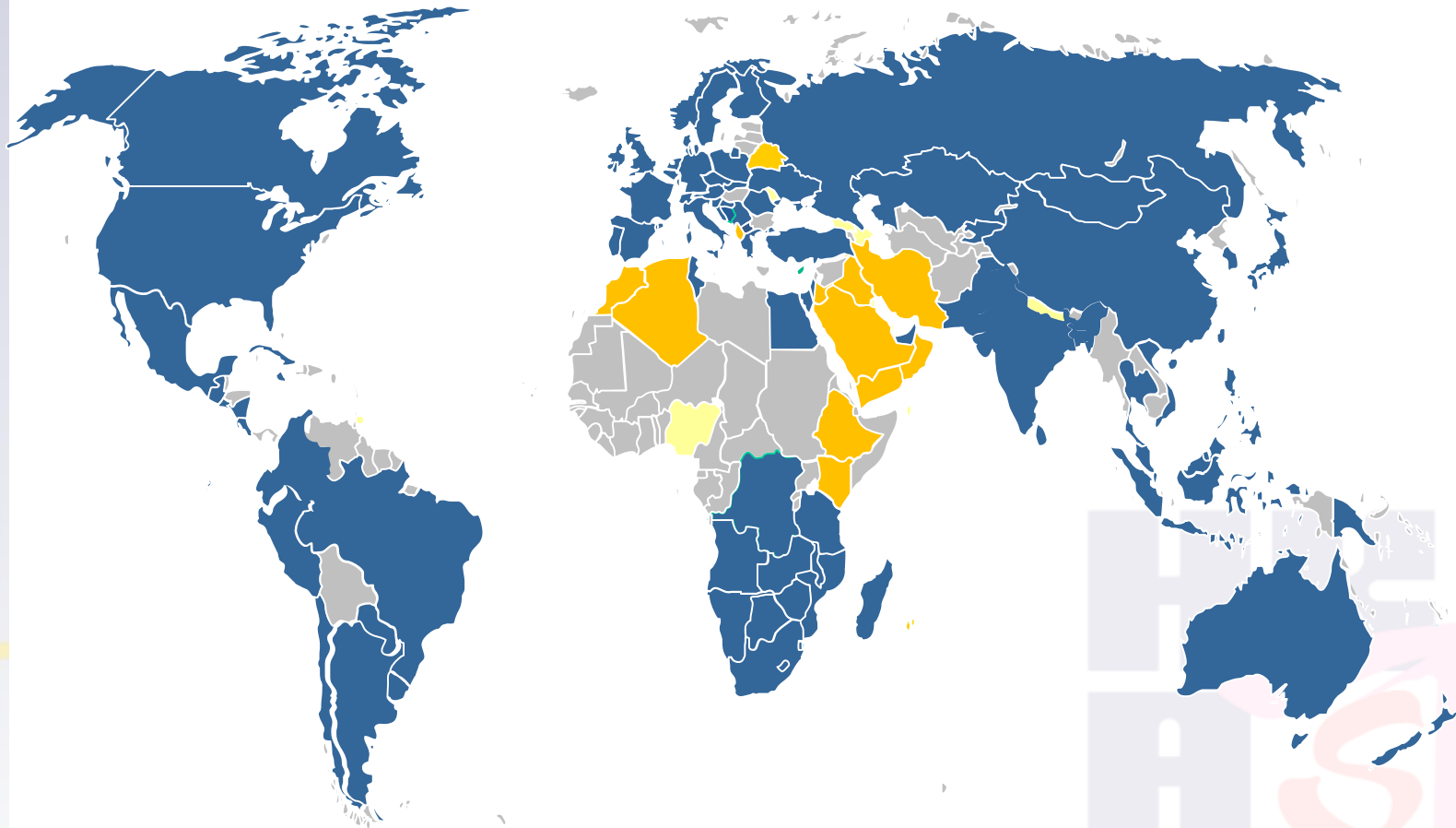
- ✦ Endorsed reports and accredited certificates issued by HKAS accredited organisations are recognised by its MRA / MLA partners (involving **120 accreditation bodies in 117 economies** in the world)

香港認可處的互認協議夥伴 (當中包括 **117 經濟體系共 120 個認可機構**) 均承認獲香港認可處認可機構所發出並印有香港認可處認可計劃標誌的報告及證書



# Coverage of the ILAC MRA

## ILAC MRA 的覆蓋範圍



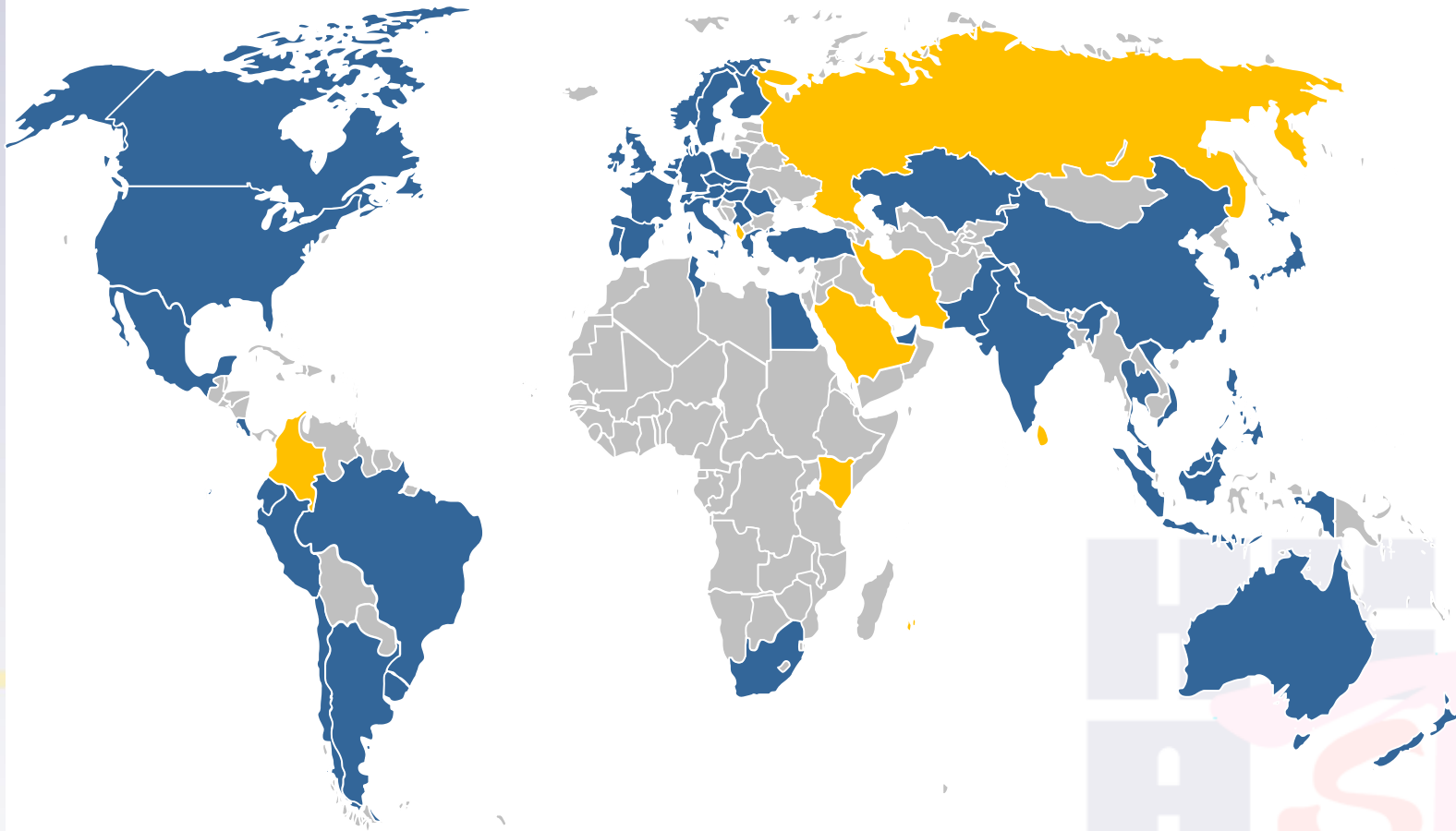
- ILAC MRA Signatories
- ILAC Associate Members
- ILAC Affiliate Members





# Coverage of the IAF MLA

## IAF MLA 的覆蓋範圍



- IAF MLA Signatories
- IAF Members not yet Signatories



# Endorsed Reports and Accredited Certificates under HKAS Accreditation Schemes

## 印有香港認可處認可標誌的報告及認證證書



- ✦ Unless otherwise approved and specified, only results of accredited activities can be shown in endorsed reports and accredited certificates

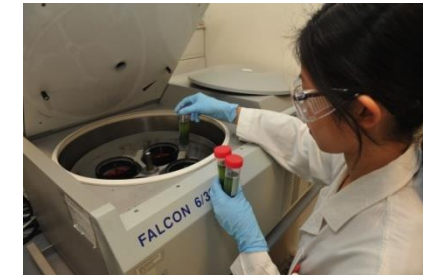
除非經批准及清楚註明，否則獲認可機構只可就獲得認可資格的活動所得結果發出印有香港認可處認可標誌的報告及證証證書。

- ✦ Since the competence of the accredited activities has been assessed, the reliability of results in endorsed reports and certificates can be assured

由於獲認可機構在獲得認可資格的活動上其能力曾經接受嚴謹的評審，載有香港認可處認可標誌的報告及證証證書上的結果會更可靠。

# 食品測試

## Food Testing



### Nutrition Information 營養資料

	Per 100g or Per 100ml/ 每 100 克或每 100 毫升
Energy / 能量	kcal or kJ / 千卡或千焦
Protein / 蛋白質	g / 克
Total fat / 總脂肪	g / 克
- Saturated fat / 飽和脂肪	g / 克
- Trans fat / 反式脂肪	g / 克
Carbohydrates / 碳水化合物	g / 克
- Sugars / 糖	g / 克
Sodium / 鈉	mg / 毫克
Insert nutrient(s) involved in claim(s) / 填入涉及聲稱的營養素	g, mg or µg 克、毫克或微克
Insert other nutrient(s) to be declared / 填入其他標示的營養素	g, mg or µg 克、毫克或微克

# Food Testing Services Provided by Hong Kong Laboratories

- Microbiological examination
- Chemical composition analysis (e.g. for use in nutrition labeling)
- Testing for food additives (e.g. anti-oxidants, preservatives, coloring matters and sweeteners, etc.)
- Testing for contaminants (e.g. trace elements, organic, pesticide and veterinary drug residues, radionuclides, etc.)
- Other food testing (e.g. GM food, food species identification by DNA sequencing)
- Testing of Food Contact Materials (e.g. testing of food containers)





# Accredited Food Testing Laboratories 獲認可食品測試實驗室

- As of Oct 2023, there are totally 22 laboratories accredited by HKAS to provide public service for testing of food and food contact materials (including micro-biological testing)
- For details, please visit [https://www.itc.gov.hk/en/quality/hkas/conformity\\_assessment\\_bodies/hoklas.html#t\\_services](https://www.itc.gov.hk/en/quality/hkas/conformity_assessment_bodies/hoklas.html#t_services)







# Accreditation of Food Testing Laboratories under HOKLAS

- ⊕ HOKLAS accreditation criteria for food testing laboratories are given in:
  - HKAS 002 Regulations for HKAS Accreditation
  - ISO/IEC 17025:2005 – ‘General requirements for the competence of testing and calibration laboratories’
  - HKAS PD001 HKAS Policy Document No. 1
  - Relevant HKAS and HOKLAS Supplementary Criteria documents, e.g. HOKLAS Supplementary Criteria No. 8 and 37

## ISO/IEC 17025:2017

- ⊕ CI 7.2.1 Selection and verification of methods
- CI 7.2.1.4 When the customer does not specify the method to be used, the laboratory shall select an appropriate method and **inform the customer** of the method chosen. Methods published either **in international, regional or national standards** ... are recommended. Laboratory-developed or modified methods can also be used.
- CI 7.2.1.5 The laboratory shall **verify** that it can properly perform methods before introducing them by ensuring that it can achieve **the required performance** ...

## ISO/IEC 17025:2017

- Cl 7.2.1.6 When **method development** is required, this shall be a **planned activity** and shall be assigned to **competent personnel** equipped with **adequate resources**. As method development proceeds, **periodic review** shall be carried out to confirm that **the needs of customer** are still being fulfilled ...

# ISO/IEC 17025:2017

- ✦ CI 7.2.2 Validation of methods
- CI 7.2.2.1 The laboratory shall validate non-standard methods, laboratory developed methods and standard methods used outside their intended scope or otherwise modified. The validation shall be as extensive as is necessary to meet the needs of the given application or field of applications.

## ISO / IEC 17025:2017

- NOTE 1 Validation may include procedures for **sampling, handling** and transportation of test and calibration **items**.
- NOTE 2 The **techniques** used for method validation can be one of, or a combination of, the following:
  - calibration or evaluation of bias and precision using reference standards or reference materials;
  - systematic assessment of factors influencing the results; ...
  - comparison of results achieved with other validated methods;
  - interlaboratory comparisons;
  - evaluation of measurement uncertainty of the results based on scientific understanding of the theoretical principles of the method and practical experience ...

## ISO/IEC 17025:2017

- Cl 7.2.2.2 When **changes** are made to validated method, the influence of such changes shall be determined and where they are found to affect the original validation, a **new method validation** shall be performed.



## ISO/IEC 17025:2017

- CI 7.2.2.3 The performance characteristics of validated methods, as assessed for the intended use, shall be relevant to the customer's needs and consistent with specified requirements.
- NOTE Performance characteristics can include, but are not limited to, measurement range, accuracy, measurement uncertainty of the results, limit of detection, limit of quantification, selectivity of the method, linearity, repeatability or reproducibility, robustness against external influences or cross-sensitivity against interference from the matrix of the sample or test object, and bias.

聯絡我們 - 網址

Contact us - website

香港認可處

Hong Kong Accreditation Service

[www.hkas.gov.hk](http://www.hkas.gov.hk)





*Thank you*

