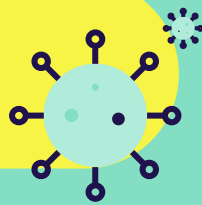


預防2019冠狀病毒病

在進口層面消毒凍房工作環境及食品包裝的指引



為進一步減低在凍房環境感染2019冠狀病毒病的風險，食物安全中心製作在進口層面消毒凍房工作環境及食品包裝消毒的指引，建議相關的預防性措施。

消毒劑

含氯的消毒劑（次氯酸鈉）：

- 家用漂白劑含5.25% 次氯酸鈉。
- 採用1比99稀釋的家用漂白劑（濃度為500 ppm）來消毒凍房的食物包裝、工作環境和設備。
- 採用1比49稀釋的家用漂白劑（濃度為1 000 ppm）來消毒被嚴重污染，或者是有確診2019冠狀病毒病個案的工作環境和相關設備。

其他的消毒劑：

- 70-80%濃度的含酒精消毒劑（乙醇、2-丙醇、1-丙醇）和季銨鹽化合物（QUATS）可用作消毒食物接觸面、容器、食物盤等。

消毒方法

- 對於貨物外包裝，在運入倉庫或裝載送貨前，應使用1比99稀釋的家用漂白劑作為消毒。
- 消毒方法可以以拭抹或噴灑方式進行。應拭抹和噴灑消毒劑在需要消毒的表面，並應在空氣流通的地方進行。
- 應確保食品有充分的保護和包裹，以免受消毒劑污染。食物包裝如非密封，亦應以拭抹方式小心進行消毒。
- 採用1比99稀釋的家用漂白劑來加強清潔和定期消毒工作環境和設備，當中包括：
 - 冷凍食品貯存運輸區域的地面、牆壁、卡板、腳車等設施和設備
 - 運輸車輛和運輸設備，包括運輸進口冷鏈食品的貨櫃、載貨車輛（特別是車廂）、手推車等
 - 冷凍設備，雪櫃與冷凍櫃的內外表面、其內層架等
 - 頻密接觸點（例如門柄、雪櫃 / 冷凍櫃的把手等）
 - 垃圾桶及其存放區
- 消毒過程中，應採取適當措施（參見「個人防護」），防止對工作人員和到場人士造成健康影響（刺激黏膜、皮膚及呼吸道）。
- 消毒被嚴重污染，或者是有確診2019冠狀病毒病個案的工作環境和相關設備時，應該採用1比49稀釋的家用漂白劑。
- 其他可有效殺滅2019冠狀病毒的消毒劑，應遵循製造商的指示進行有效消毒處理，例如接觸時間、正確的濃度以及稀釋後的保存期限等。

使用含氯的消毒劑注意事項

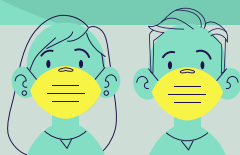
- 在空氣流通的地方稀釋含氯的消毒劑。
- 稀釋時要用冷水，因為熱水會令主要成分分解，失去效能。
- 避免用於金屬、羊毛、尼龍、絲綢、染色布料及油漆表面。
- 不要與其他家用清潔劑混合使用，以免降低其消毒效能及產生危險的化學作用。
- 未經稀釋的漂白水在陽光下會釋出有毒氣體，所以應儲存於陰涼及有遮蔽的地方。
- 漂白水中的次氯酸鈉會隨著時間而分解。為確保其消毒效能，應購買近期製造的漂白水並避免過量儲存。
- 為達致有效消毒，經稀釋的漂白水應該在準備後24小時內使用。因存放時間越長，分解量越多。

個人防護

- 由於漂白水會刺激黏膜、皮膚及呼吸道，所以稀釋及使用漂白水時須佩戴適當個人防護裝備（如口罩、手套、護眼罩/面罩及膠圍裙）。
- 完成消毒程序後，必須徹底洗手。
- 如漂白水濺入眼睛，須立即以清水沖洗最少15分鐘和向醫生求診。

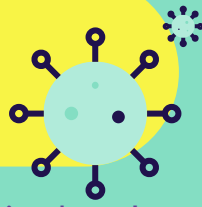


有關2019冠狀病毒病的最新資訊，可瀏覽 www.coronavirus.gov.hk
更多有關食物業處所的規例、食物衛生及安全標準的資訊，可瀏覽食物環境衛生署的網頁 www.fehd.gov.hk



Prevention of COVID-19

Guidance on Disinfecting the Working Environment and the Food Package of Cold Stores at Import Level



In order to further reduce the risk of contracting COVID-19 in cold stores, the Centre for Food Safety produced the guidance on disinfection for the working environment and the food package of cold stores at import level, recommending relevant preventive measures.

Disinfectants

Chlorine-based disinfectants (sodium hypochlorite):

- Household bleach containing 5.25% sodium hypochlorite.
- **1:99 diluted household bleach** (concentration: 500 ppm) is used for disinfecting the food package, working environment and equipment of cold stores.
- **1:49 diluted household bleach** (concentration: 1 000 ppm) is used for disinfecting the environment and equipment, when they are heavily contaminated or when a confirmed case of COVID-19 is encountered.

Other disinfectants:

- Alcohol-based disinfectants (ethanol, propan-2-ol, propan-1-ol) in concentration of 70-80% and quaternary ammonium compounds (QUATS) can be used to decontaminate food contact surfaces, containers and food trays, etc.

Use of Disinfectants

- For outer package, **1:99 diluted household bleach** should be used for disinfection, before bringing into warehouse or loading for delivery.
- Application of disinfectants can be conducted by wiping or spraying. Disinfectants should be wiped or sprayed onto surfaces that require disinfection, and it should be conducted under well ventilated areas.
- Should ensure that the food are well-wrapped and well-protected, to prevent the contamination by disinfectants. If the food package is not sealed, it should be disinfected by wiping the surface carefully.
- Step up cleansing and regular disinfection, by applying **1:99 diluted household bleach**, to the working environment and equipment, including:
 - Facilities and equipment of cold food storage and loading areas such as floor, wall, pallet, pallet truck, etc.
 - Transportation vehicles and equipment, including the containers for imported cold chain food, transportation trucks (especially inner compartments), trolleys, etc.
 - Cooling equipment, shelves, inner and outer surfaces of refrigerators and chillers, etc.
 - High touch points (e.g. doorknobs, handles of refrigerators/freezers, etc.)
 - Rubbish bin and its storage area
- During disinfection, appropriate measures (see 'Personal Protection') should be adopted to prevent adverse health effects, i.e. irritating mucous membranes, the skin and the airway, posed on workers and surrounding people.
- When the environment and equipment are heavily contaminated or when a confirmed case of COVID-19 is encountered, use **1:49 diluted household bleach** for disinfection.
- For other disinfectants that are shown to be effective against SARS-CoV-2, follow the instruction of manufacturers for effective sanitation, e.g. contact time, correct concentration, and shelf life after dilution, etc.

Precautions for the Use of Chlorine-based Disinfectants

- Dilute chlorine-based disinfectants in a well-ventilated area.
- Mix bleach with cold water as hot water decomposes the active ingredient of bleach and renders it ineffective.
- Avoid using bleach on metals, wool, nylon, silk, dyed fabric and painted surfaces.
- Do not mix bleach together with other household detergents as this reduces its effectiveness in disinfection and causes dangerous chemical reactions.
- Undiluted bleach liberates a toxic gas when exposed to sunlight, thus store in a cool and shaded place.
- Sodium hypochlorite in bleach decomposes with time. To ensure its effectiveness, purchase recently produced bleach and avoid over-stocking.
- For effective disinfection, use diluted bleach within 24 hours after preparation as decomposition increases with time if left unused.

Personal Protection

- Put on appropriate Personal Protective Equipment (e.g. mask, gloves, safety goggles/face shield, and plastic apron) when diluting or using bleach as it irritates mucous membranes, the skin and the airway.
- Wash hands thoroughly after the disinfecting procedure.
- If bleach gets into the eyes, immediately rinse with water for at least 15 minutes and consult a doctor.



For more information on COVID-19, please visit www.coronavirus.gov.hk
For further details on regulations, food hygiene and safety standards for food premises, please visit FEHD website: www.fehd.gov.hk

