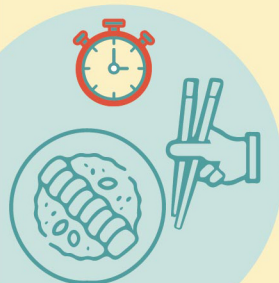


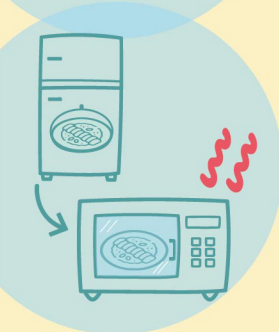
買燒味？食安仔安心提示

Buying siu-mei? Here are some tips from On



斬件燒味應盡早食用，
尤其是包裝好的

Chopped siu-mei, especially those in wrapped packages, should be eaten as soon as possible.



如稍後進食，
燒味應盡快放入雪櫃，
並徹底翻熱才食用

For consumption at a later time, siu-mei should be kept under refrigeration as soon as possible and be reheated thoroughly before consumption.

