

常見問題 FAQ

如何知道已被獲選參與調查？

Have I been selected to participate in this Survey?

獲選的學生會收到經由學校發出的通告，內附中心的邀請信，闡釋訪問的安排。

Inited students will receive school notices, including invitation letters elaborating the arrangement of the interview from CFS.

誰來負責調查？

Who will carry out this Survey?

食物安全中心的註冊營養師負責進行調查。所有營養師會佩戴是次調查的訪問員證。

Registered Dietitians of CFS will conduct this Survey. All interviewers will wear Interviewer Identity Card of this Survey.

我需要在參與調查前作任何準備嗎？

Do I need to prepare for the Survey?

參與學生不需為訪問作事前準備，並可保持慣常飲食。學生可選擇視像會議或其他會面地點，並自由選擇受訪時間，務求配合學生的日程。

There is no need for the participated students to prepare for the survey in advance, and they can maintain their usual diet. Students can either choose video or face-to-face interview. Also, students can select an interview time slot that accommodates their schedule.



謹請鼎力支持和合作 Your partnership and collaboration are crucial

守護學生健康，請大家多多支持，把回條交回學校。我們會聯絡您們安排訪問。
Let's support the survey. Please return the reply slip to school. We will contact you for arrangement.



如有查詢，請於早上9時至下午9時與本中心的研究人員聯絡(電話: 3962 2017 · 電郵: food_intake_survey@fehd.gov.hk)

For further information, please contact CFS hotline at 3962 2017, 9:00 a.m. to 9:00 p.m.
Email: food_intake_survey@fehd.gov.hk.

宣傳短片 Promotion video



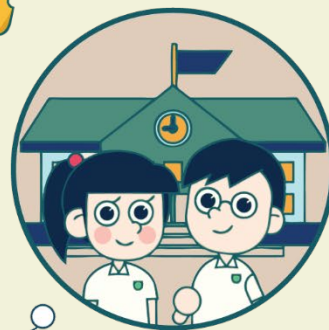
中文



English



中小學食物消費量調查 Food Consumption Survey in Primary and Secondary Schools 2021



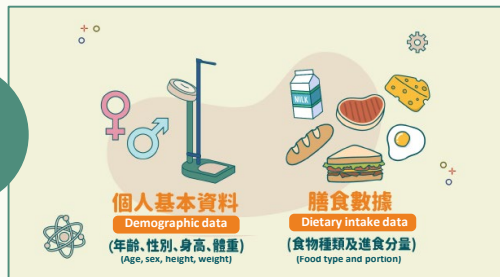
訪問流程 Workflow of the interviews

1



獲邀請參與的學生是隨機抽樣選出。
Randomly selected students are invited to the survey.

4



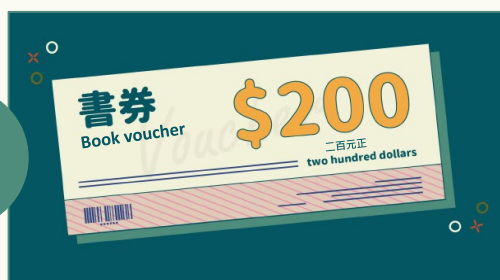
中心會收集基本個人資料及膳食數據。
The CFS will collect demographic and dietary intake data.

2



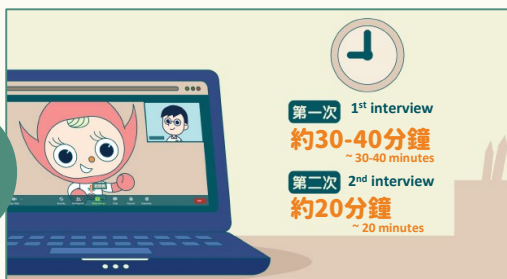
訪問會在課餘時間及考試測驗完結後進行。
學生可選擇視像會議或其他會面地點。
Interviews will be held after school and after exams,
students can choose the time and mode of interviews.

5



完成兩次訪問，會送上二百元書券，以示感謝。
After completing two interviews, book vouchers worth of
two hundred dollars will be given as a token of thanks.

3



總共有兩次訪問。
There will be two interviews.

6



註冊營養師可以為學生講解其膳食概要，家長和學生亦可免費參加一場有關營養及健康的網上講座。
A registered dietitian will brief the students on their diet.
Parents and student will be invited to join an online nutrition and health talk for free.

食物安全中心現正於中小學進行食物消費量調查，收集學生的膳食數據。這些數據非常重要，是用作評估食物安全方面的風險，保障學生健康。

The Centre for Food Safety is conducting food consumption survey in primary and secondary schools to collect dietary intake data of students. These data are crucial to assessing food safety risks for the safeguarding of students' health.

食物消費量調查收集本港人口膳食數據，即市民在吃些什麼和進食的分量。這些數據可以幫助評估市民在飲食方面攝入危害(例如污染物及食物添加劑等)的潛在風險，及了解這些風險的高低和哪個人口組別的風險最高。

食物消費量資料對政府評估食物安全的風險、制訂提高香港食物安全的公共政策和教育策略，至為重要。因此，我們非常需要您的參與。

A food consumption survey is a survey to collect dietary intake data of the local population, i.e. what types and amount of food that people are eating. We use these data to assess if the public is exposed to any potential dietary risks arising from hazards (e.g. contaminants and food additives), and to understand the size of the risk and which population groups may be most at risk.

Food consumption information is vital for the Government in assessing food safety risk, and formulating public policies and education strategies to promote food safety in Hong Kong. Therefore, we greatly appreciate your participation.



訪問所得的數據會嚴加保密。研究結果以整體模式發放，不會顯示個別受訪同學的資料。

Data collected will be kept strictly confidential. Survey results will be published in aggregated form. Details of participants will not be disclosed.

