

# Sampling Plan for Nutrition Labelling Compliance Testing

**Centre for Food Safety**

# Responsibility of the trade

- Ensuring that:
  - the nutrition label and claims are compliant with the Food and Drugs (Composition and Labelling) Regulations; and
  - the label values accurately reflect the nutrient content of the product.

# Sampling Plan

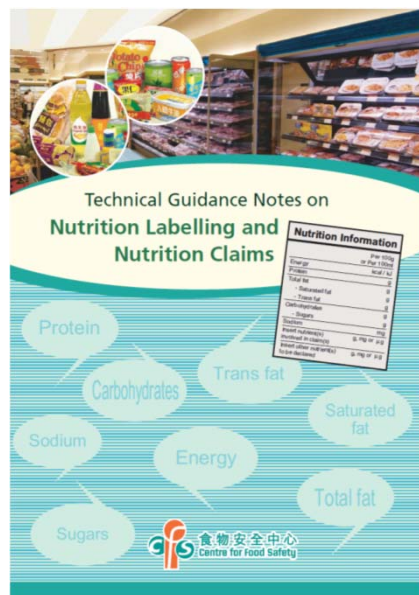
- Requires at least 12 individually prepackaged consumer units:
  - from the same food lot; and
  - combined to make a composite sample for analyze.
- Analysis Result
  - Estimate of the lot nutrient content.

# Criteria for compliance

- The analysis results shall be interpreted according to:
  - the standards given in the “Technical Guidance Notes on Nutrition Labelling and Nutrition Claims”; and
  - the rounding rules given in the Technical Guidance Notes.
- For nutrition claims, the values should fall within the limits of the rounding rules given in the Technical Guidance Notes.

# Technical Guidance Notes on Nutrition Labelling and Nutrition Claims

- Centre for Food Safety has uploaded the “Technical Guidance Notes on Nutrition Labelling and Nutrition Claims” and other relevant nutrition labelling information into CFS’s website for reference by consumers and the trade.



# Power to take samples of food for nutrient content analysis

- In accordance with sections 62 & 63 of Public Health and Municipal Services Ordinance, public officer may takes samples for analysis of any food -
  - By virtue of Sec 62(1)(b), where any such food is kept for retail sale in unopened packages, no such sample shall consist of less than the whole of the contents of any one such package.
    - It is sufficient to take only one package of food as sample.
    - CFS to consider and determine whether more than one package of food should be taken as a single sample for analysis

## Power to take samples of food for nutrient content analysis

- Officer shall take such steps as may be necessary to satisfy himself that the sample taken is a **fair sample** of the bulk of the food in question.
- Officer shall forthwith divide such sample into 3 parts.

# Present Situation in taking sample

- Difficulty encountered in taking 12 individually prepackaged consumer units from the same food lot at a retail outlet.
- CFS is reviewing the number of consumer units in one sample for taking sample of food for nutrient content analysis under the provisions in sections 62 - 64 of Public Health and Municipal Services Ordinance (Cap.132)



~ Thank you ~